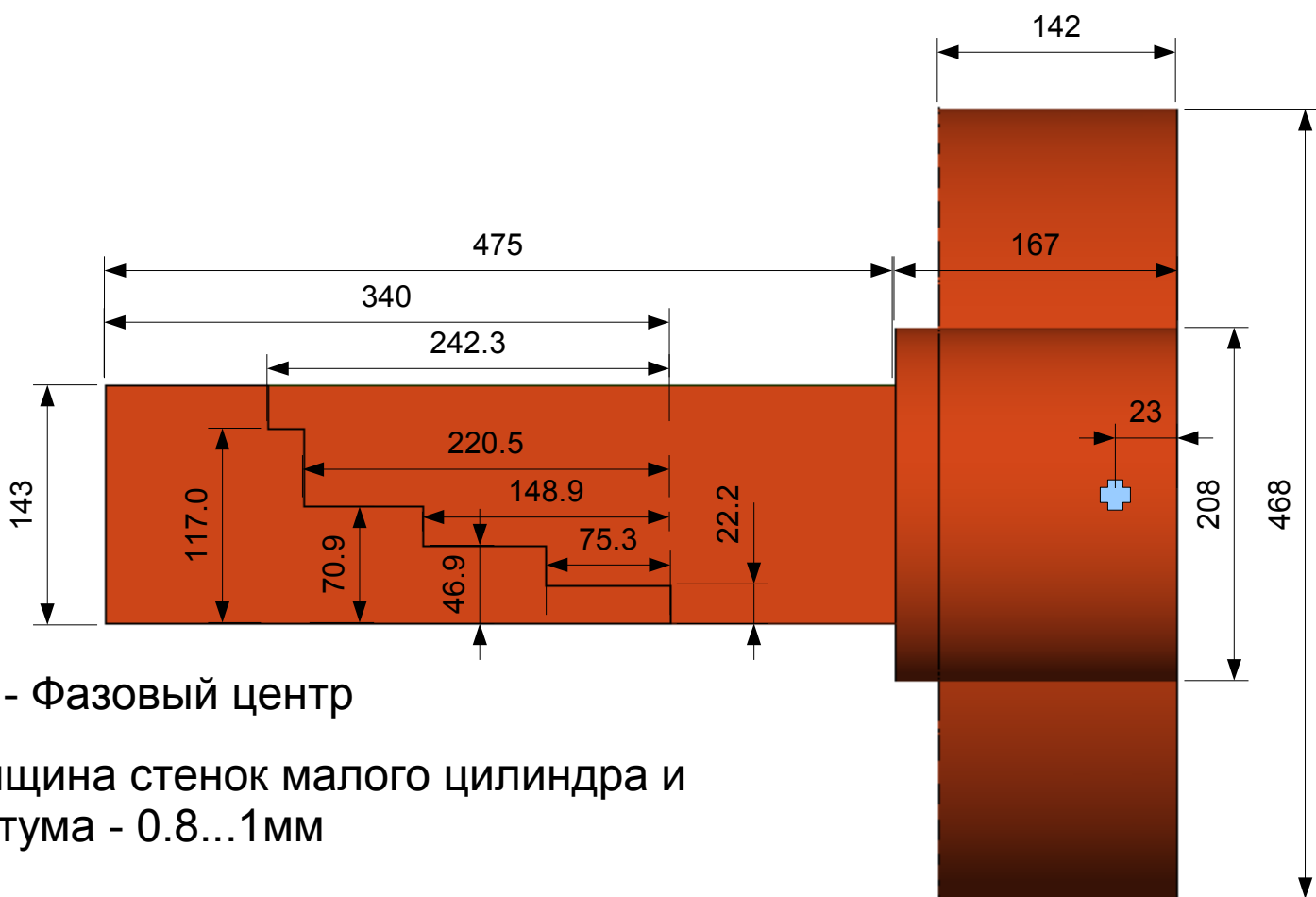
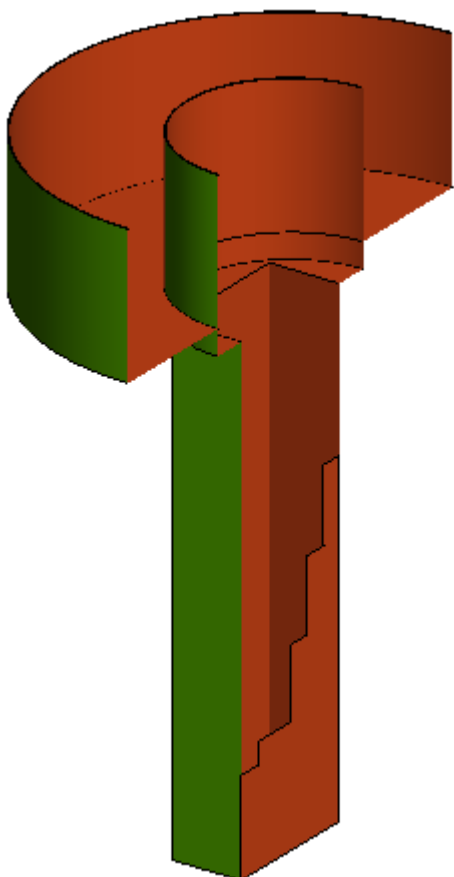


1296МГц. Облучатель для параболы с F/D 0.39...0.45



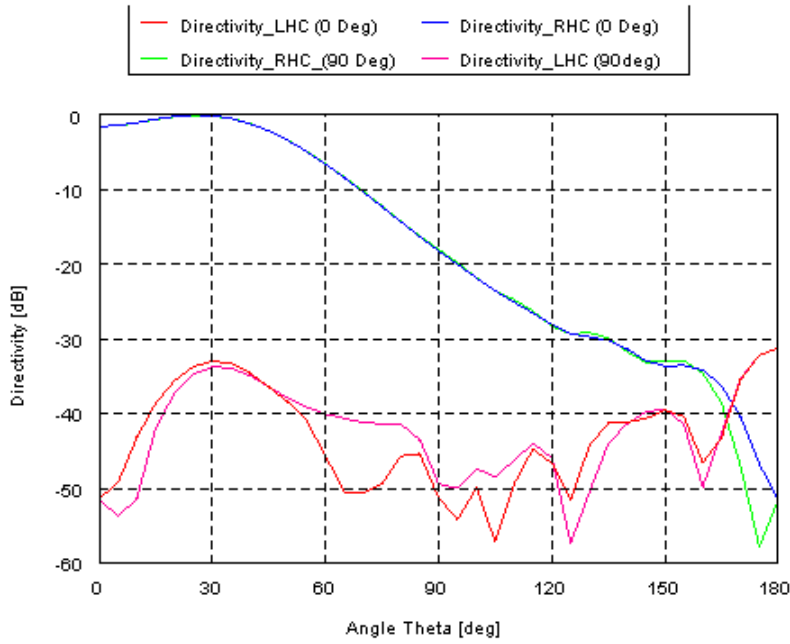
⊕ - Фазовый центр

Толщина стенок малого цилиндра и септума - 0.8...1мм



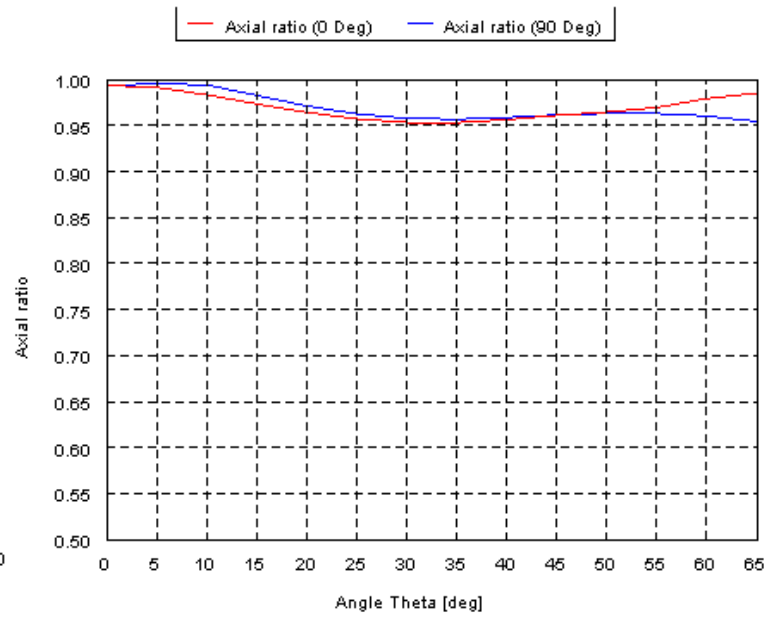
Характеристики. (FEKO 5.2)

Directivity



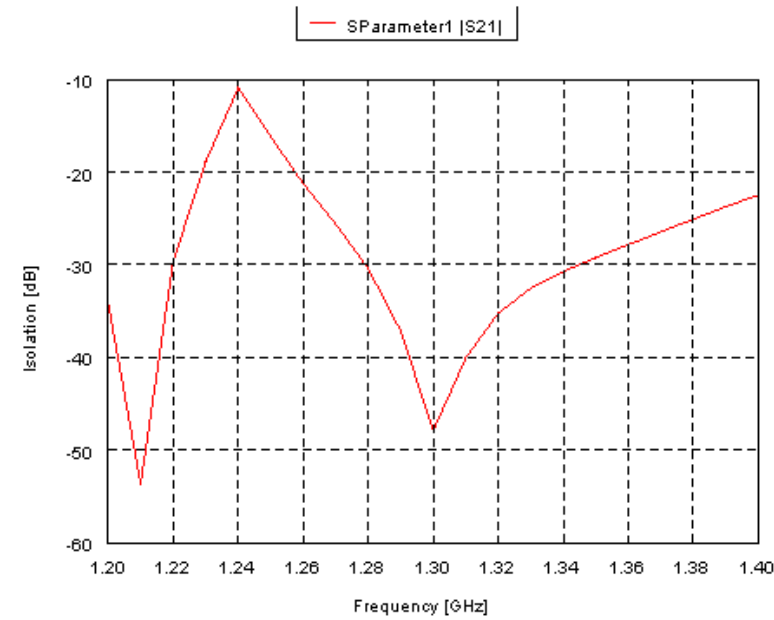
2007-01-23 : SuperRA3AQ_septum

Axial ratio



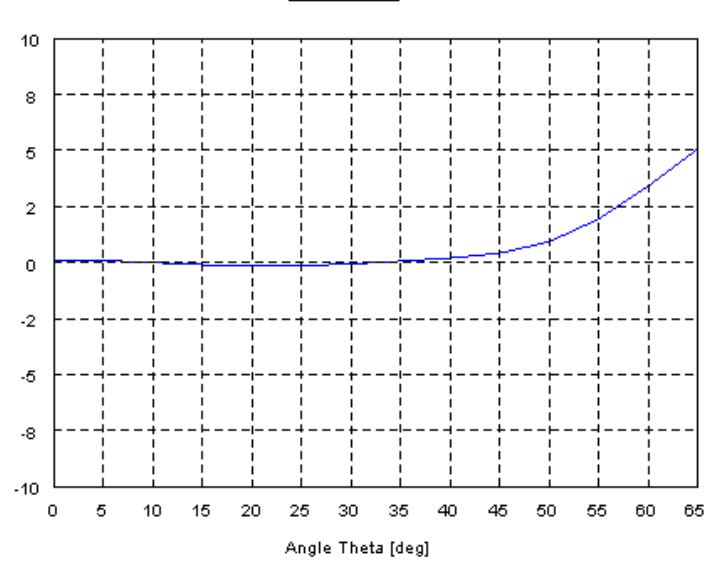
2007-01-24 : SuperRA3AQ_septum

Isolation



2007-01-23 : SuperRA3AQ_septum

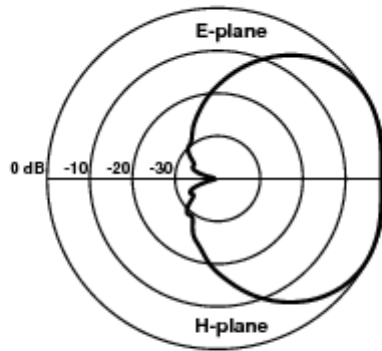
Phase



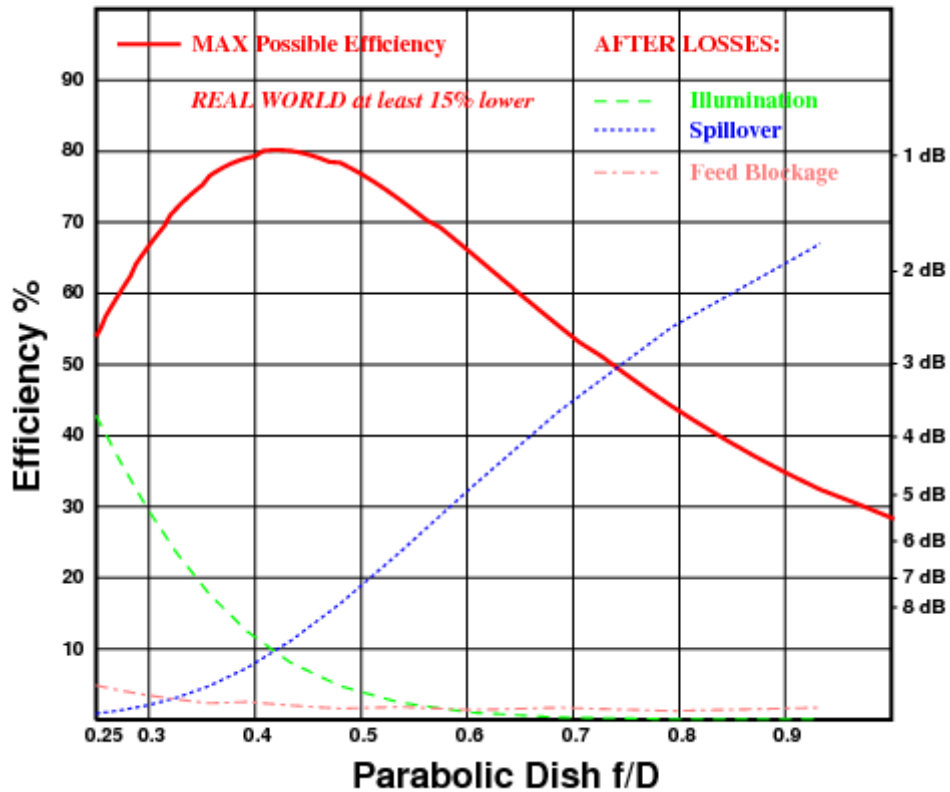
2007-01-24 : SuperRA3AQ_septum

Результаты расчета с помощью программы FEEDPAT (W1GHZ)

RA3AQ feed with septum

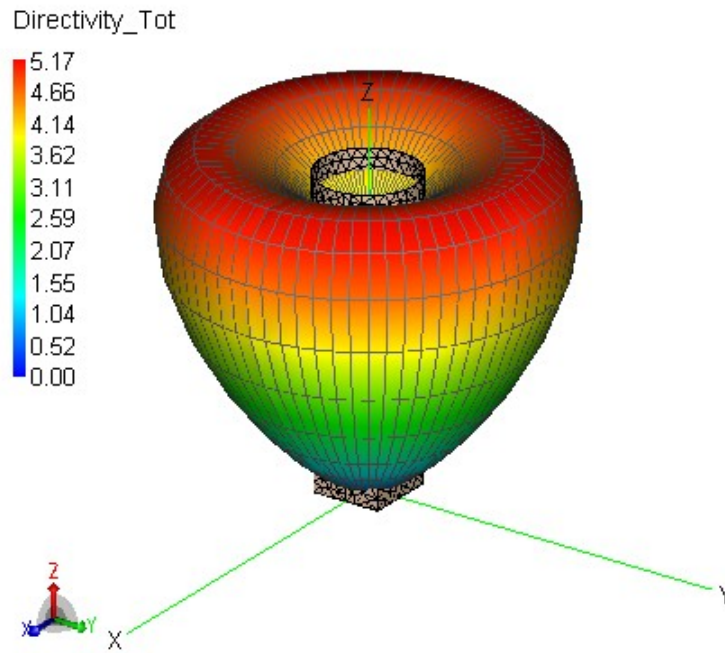


Dish diameter = 20λ
Feed diameter = 2λ



Half Angle	f/D	Edge Illum	-----EFFICIENCIES-----			
			TOTAL	Illum	Spillover	Blockage
20	1.418	-0.20 dB	13.37%	99.88%	13.63%	98.19%
25	1.128	-0.01 dB	22.07%	99.87%	22.35%	98.87%
30	0.933	-0.09 dB	32.41%	99.90%	33.01%	98.28%
35	0.793	-0.47 dB	44.15%	99.89%	44.77%	98.74%
40	0.687	-1.16 dB	55.38%	99.65%	56.55%	98.27%
45	0.604	-2.14 dB	65.72%	98.95%	67.35%	98.60%
50	0.536	-3.39 dB	73.24%	97.55%	76.48%	98.16%
55	0.480	-4.88 dB	78.39%	95.23%	83.65%	98.41%
60	0.433	-6.55 dB	80.06%	91.89%	88.95%	97.95%
65	0.392	-8.37 dB	79.06%	87.54%	92.68%	97.46%
70	0.357	-10.26 dB	76.54%	82.33%	95.21%	97.65%
75	0.326	-12.24 dB	71.93%	76.46%	96.89%	97.11%
80	0.298	-14.28 dB	66.32%	70.14%	97.97%	96.51%
85	0.273	-16.26 dB	60.18%	63.63%	98.66%	95.86%
90	0.250	-18.09 dB	53.91%	57.17%	99.10%	95.14%

3D диаграмма направленности (лин. масштаб)



Плотность токов на поверхности рупора

