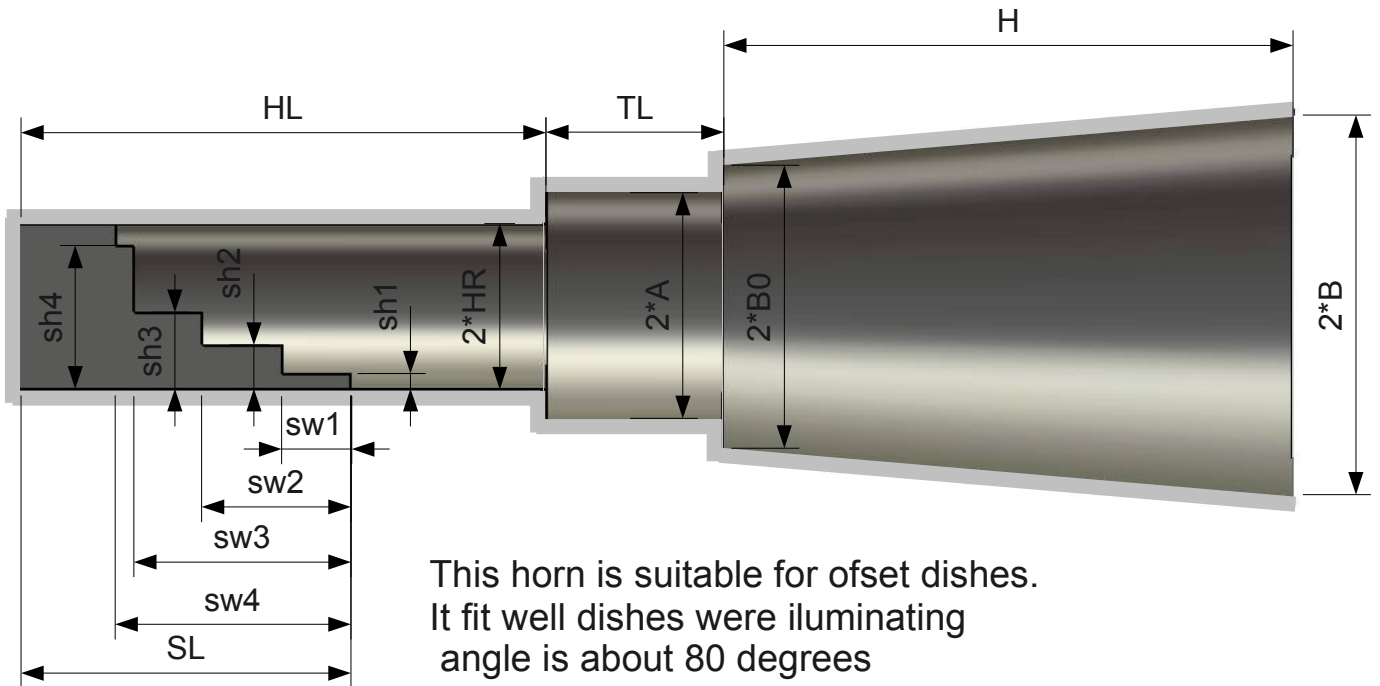


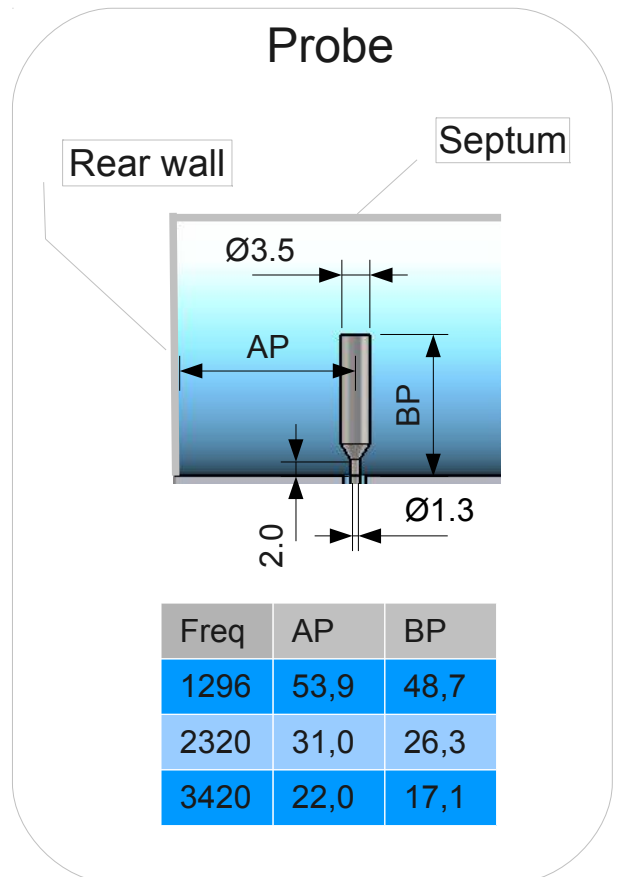
# Dual mode flare horn with round septum.



	Frequency, [MHz]					
Size	1296	2320	3420	5760	10368	10368(1)
A	120,9	67,5	45,8	27,2	15,1	15,0
B	200,5	112,0	76,0	45,1	25,1	25,0
B0	150,4	84,0	57,0	33,8	18,8	18,8
H	583,6	326,0	221,2	131,3	73,0	73,0
HL	540,0	301,7	204,6			
HR	84,0	46,9	31,8	18,9	10,5	10,0
TL	180,0	100,6	68,2	40,5	22,5	24,3

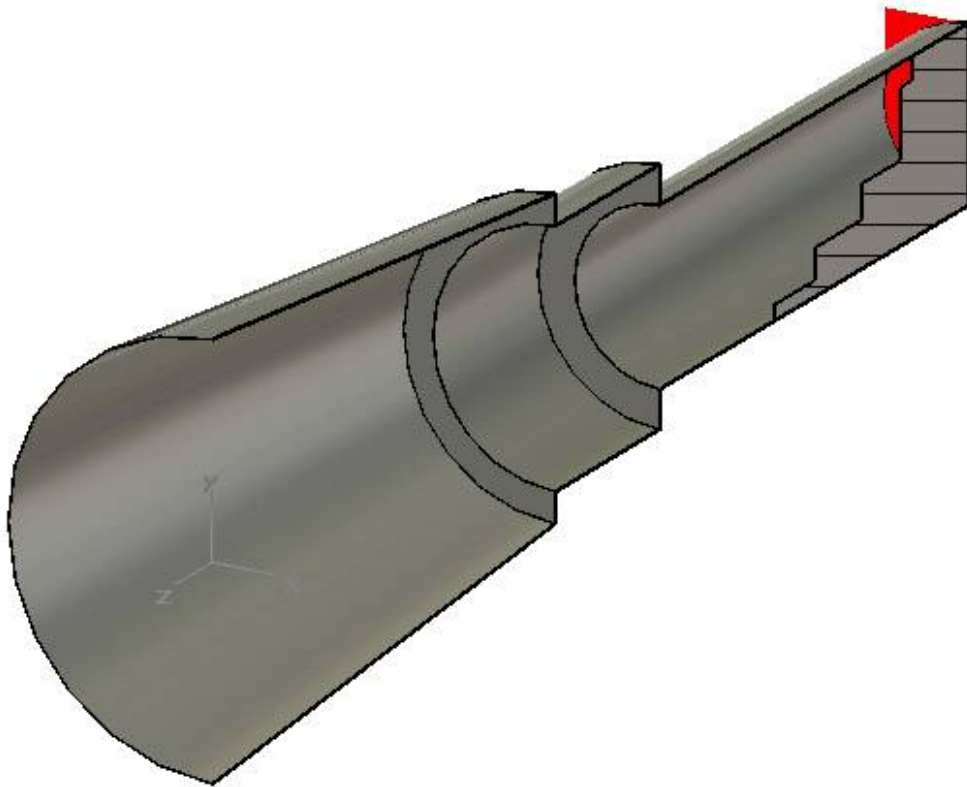
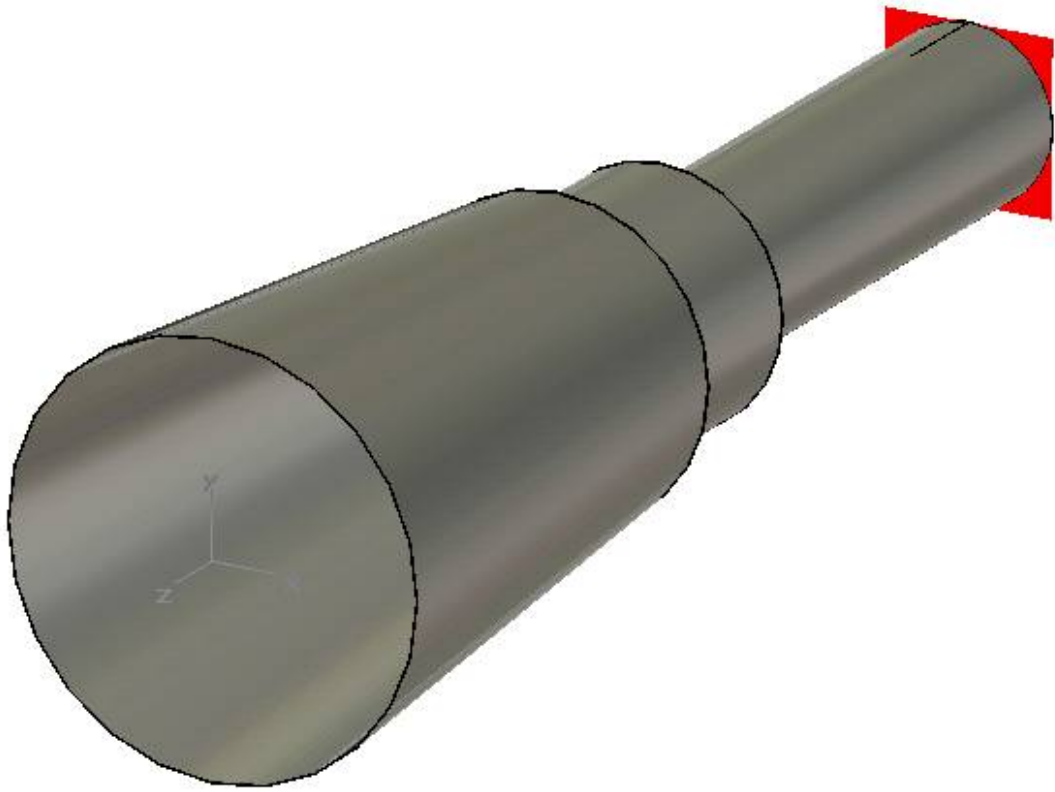
## Septum

sh1	14,4	8,0	5,5
sh2	44,8	25,0	17,0
sh3	78,2	43,7	29,6
sh4	146,4	81,8	55,5
SL	340,0	189,9	128,8
sw1	69,6	38,9	26,4
sw2	151,8	84,8	57,5
sw3	221,6	123,8	84,0
sw4	239,7	133,9	90,8

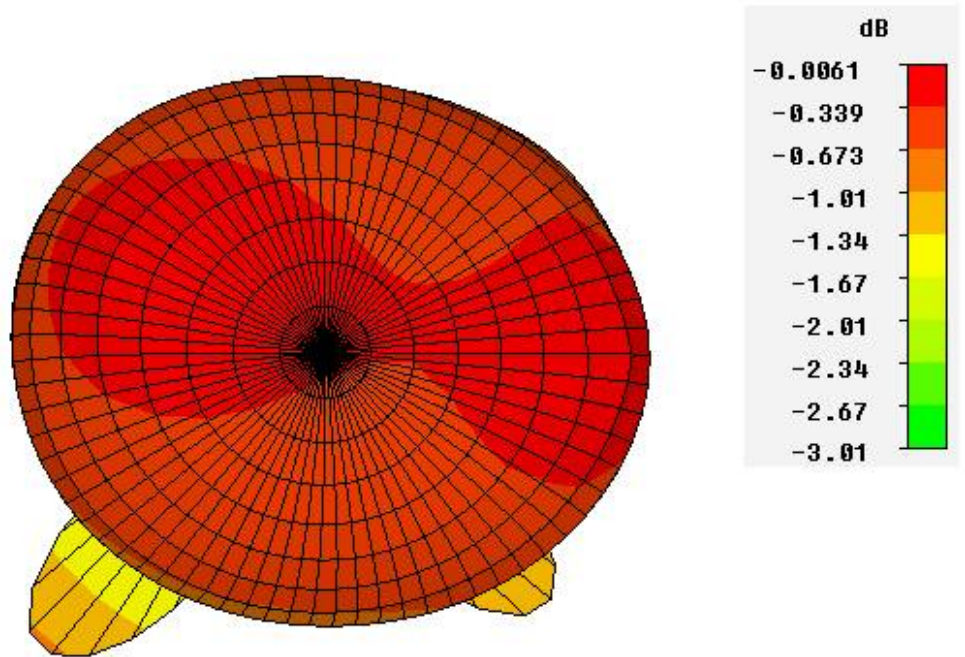


(1) — Reoptimized for new circular waveguide diameter.  
All sizes are in mm.

3D view

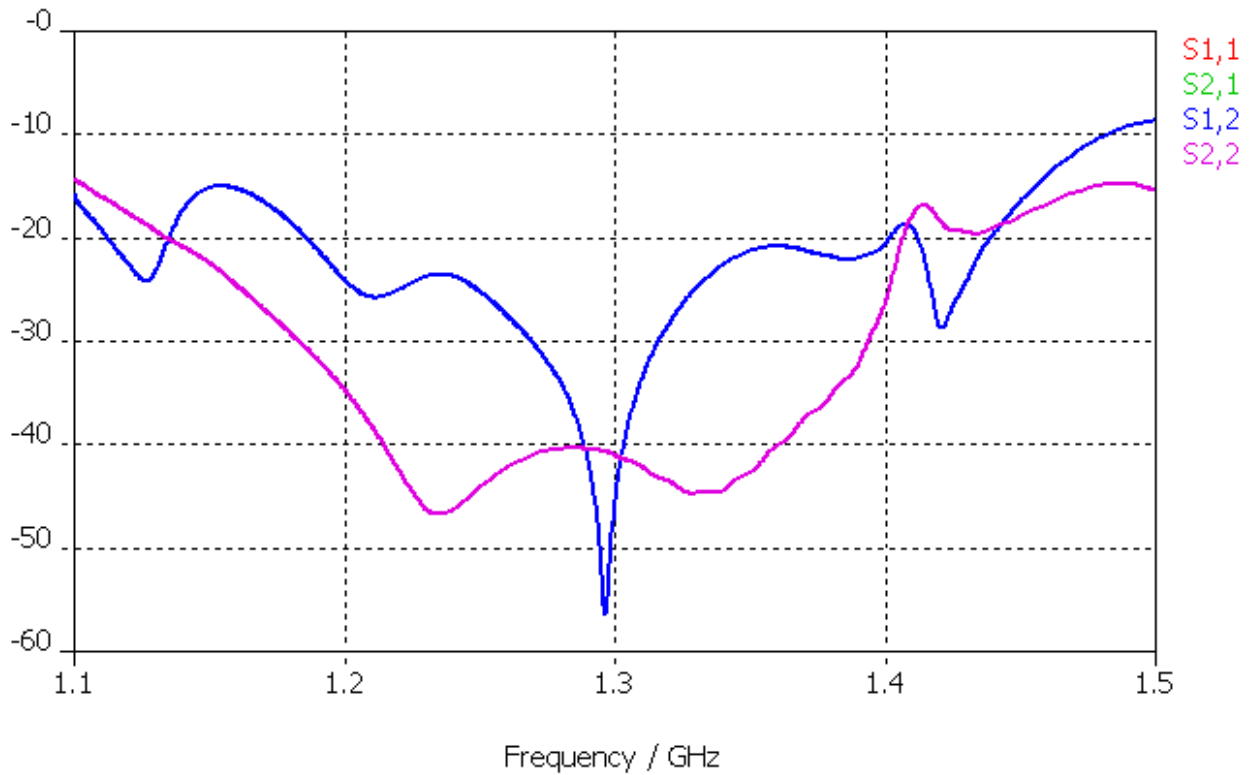


# Axial ratio

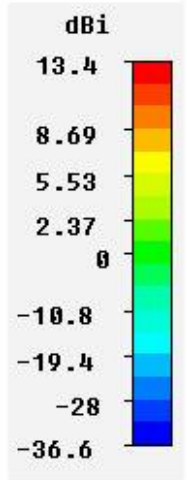
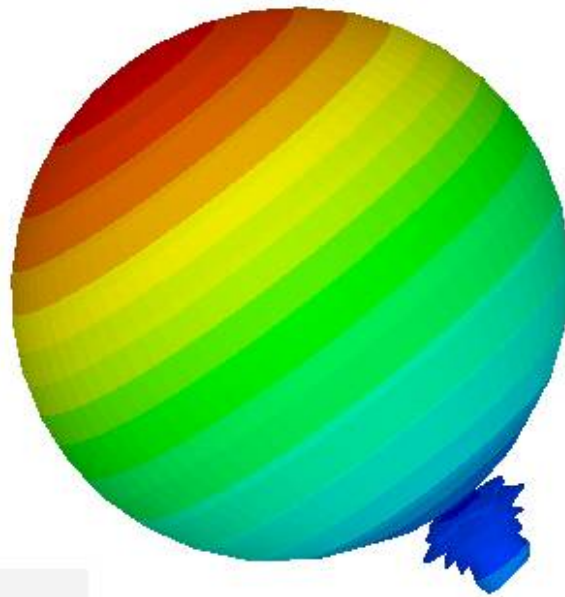


Type	Farfield
Approximation	enabled ( $kR \gg 1$ )
Monitor	farfield (f=1.296) [1]
Component	Axial Ratio
Frequency	1.296
Phase center	indeterminable

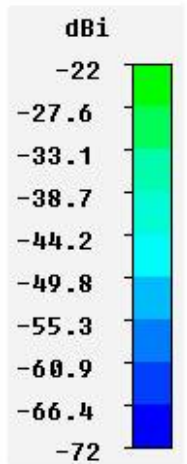
## S-Parameter Magnitude in dB



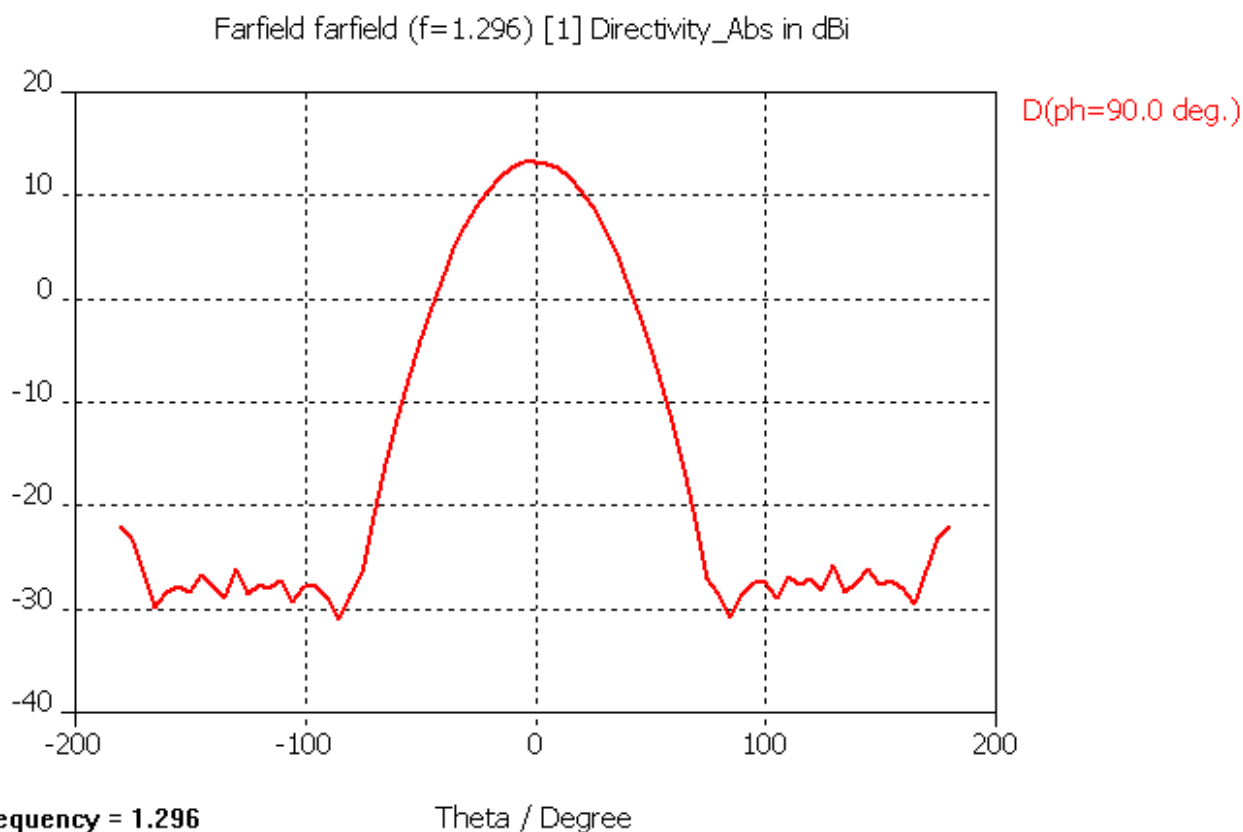
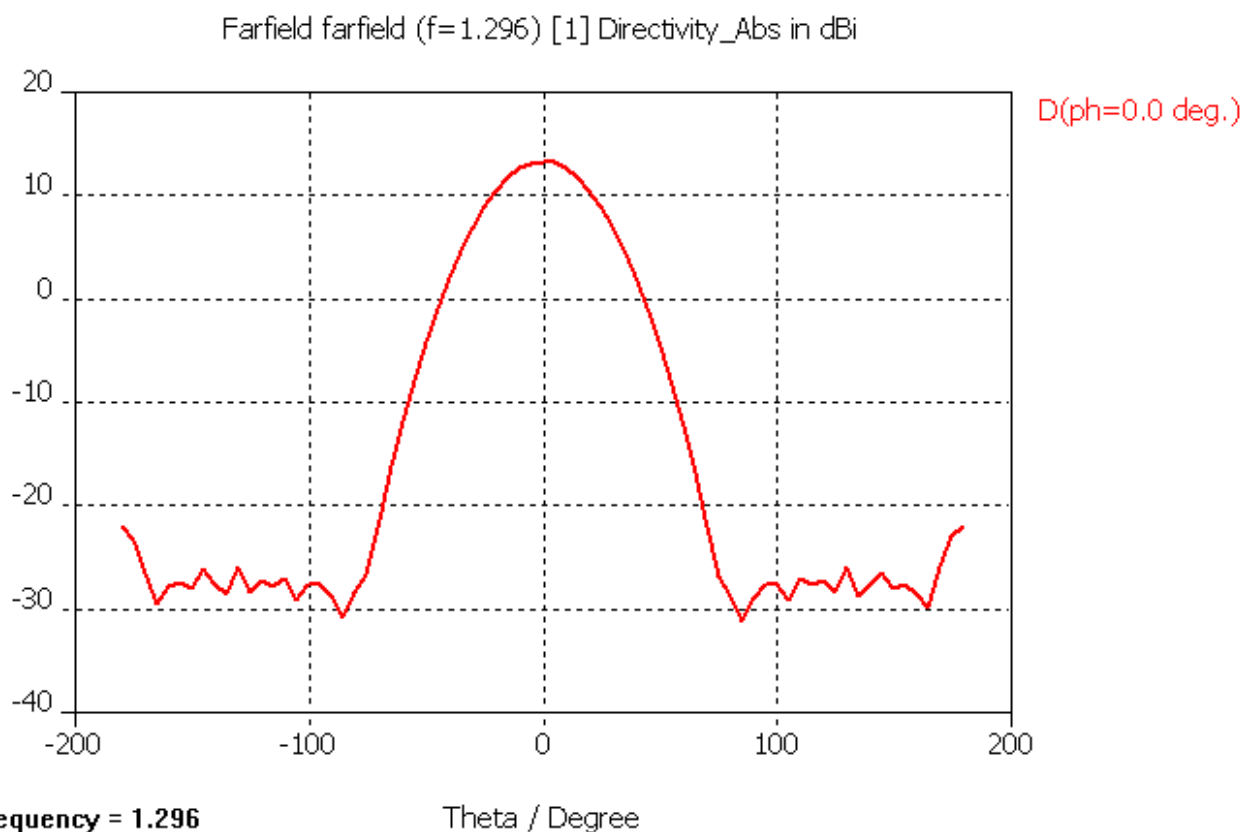
# Far field pattern



Type	Farfield
Approximation	enabled ( $kR \gg 1$ )
Monitor	farfield (f=1.296) [1]
Component	Right Polarisation
Output	Directivity
Frequency	1.296
Phase center	(0.553093, 0.797915, 6.80298) Sigma 0.564498



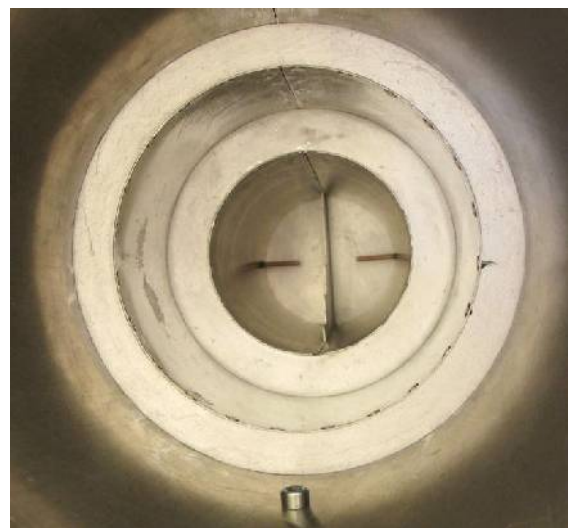
Type	Farfield
Approximation	enabled ( $kR \gg 1$ )
Monitor	farfield (f=1.296) [1]
Component	Left Polarisation
Output	Directivity
Frequency	1.296
Phase center	(0.553093, 0.797915, 6.80298) Sigma 0.564498



3cm horn for 2.4m ofset dish. RA3AQ in KO85je



13cm horn for 2.4m ofset dish. RW3BP in KO85ws



73 de RA3AQ